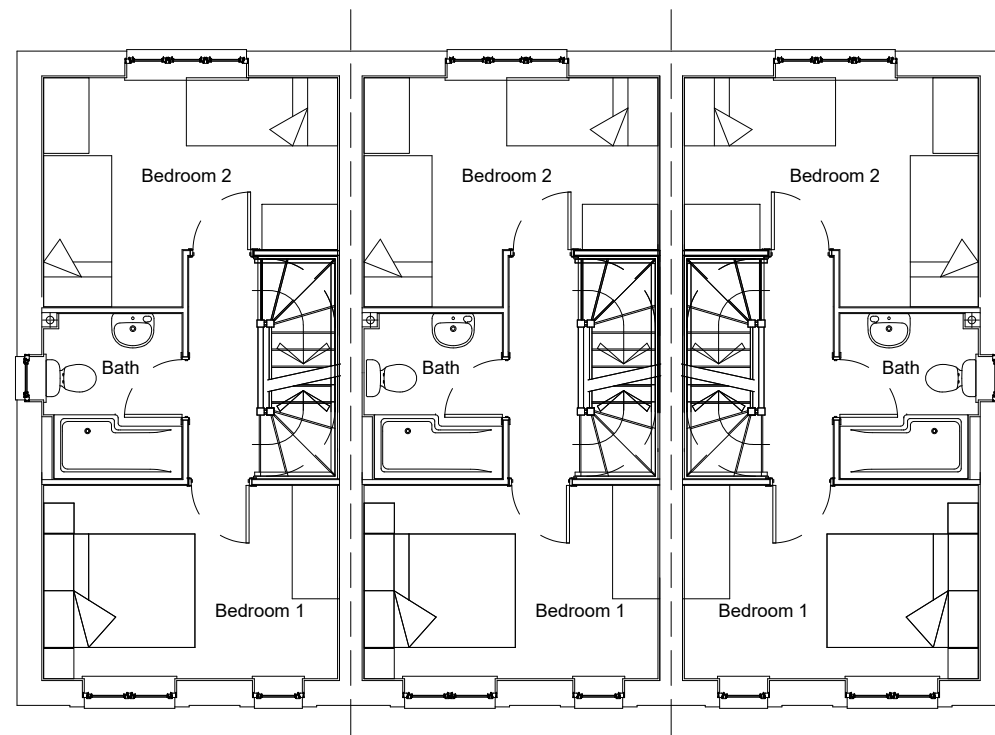
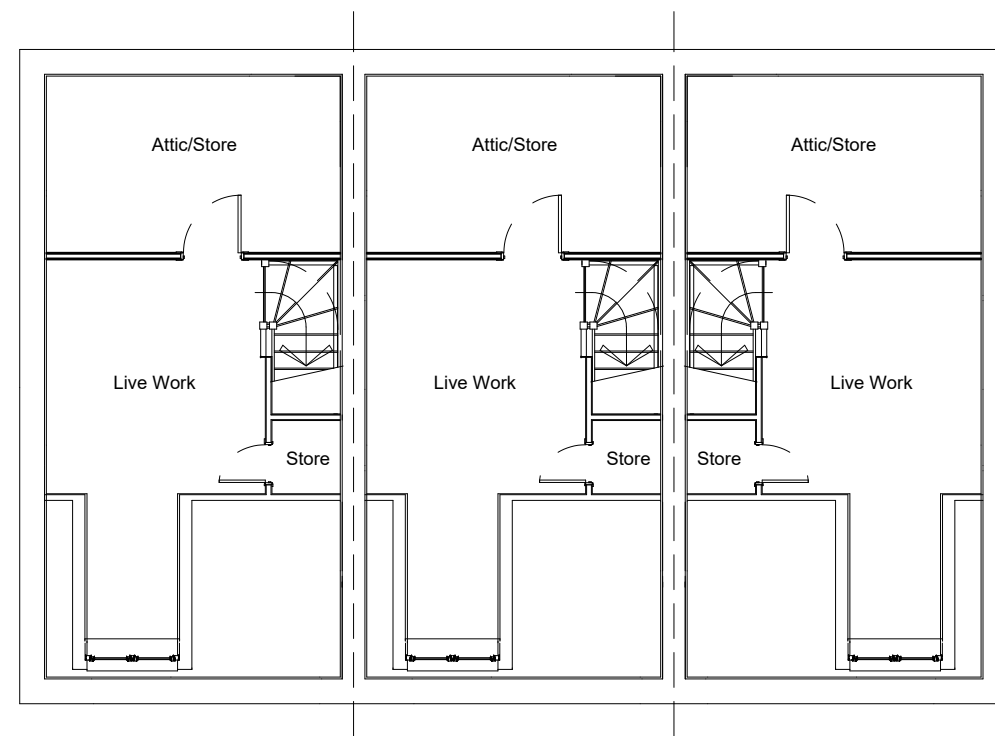


Ground Floor



First Floor



Second Floor

Rev	Date	By	Comment

**Eden STONE**

1st Floor  
Building 102  
Wales 1 Business Park  
Magor  
NP26 3DG  
Tel - 01291 674800

Project Title  
**Orb Drive, Newport  
Phase 4**

Drawing Title  
**House Type - Tetford  
Plots 16-18  
Floor Plans**

Drawing Status  
**Planning**

Drawn By HR	Checked By	Scales 1:100	Date A3 Aug 2021
----------------	------------	-----------------	---------------------

Project No. 1712	Drawing No. P4 - 108	Rev.
---------------------	-------------------------	------